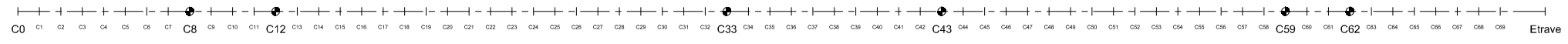
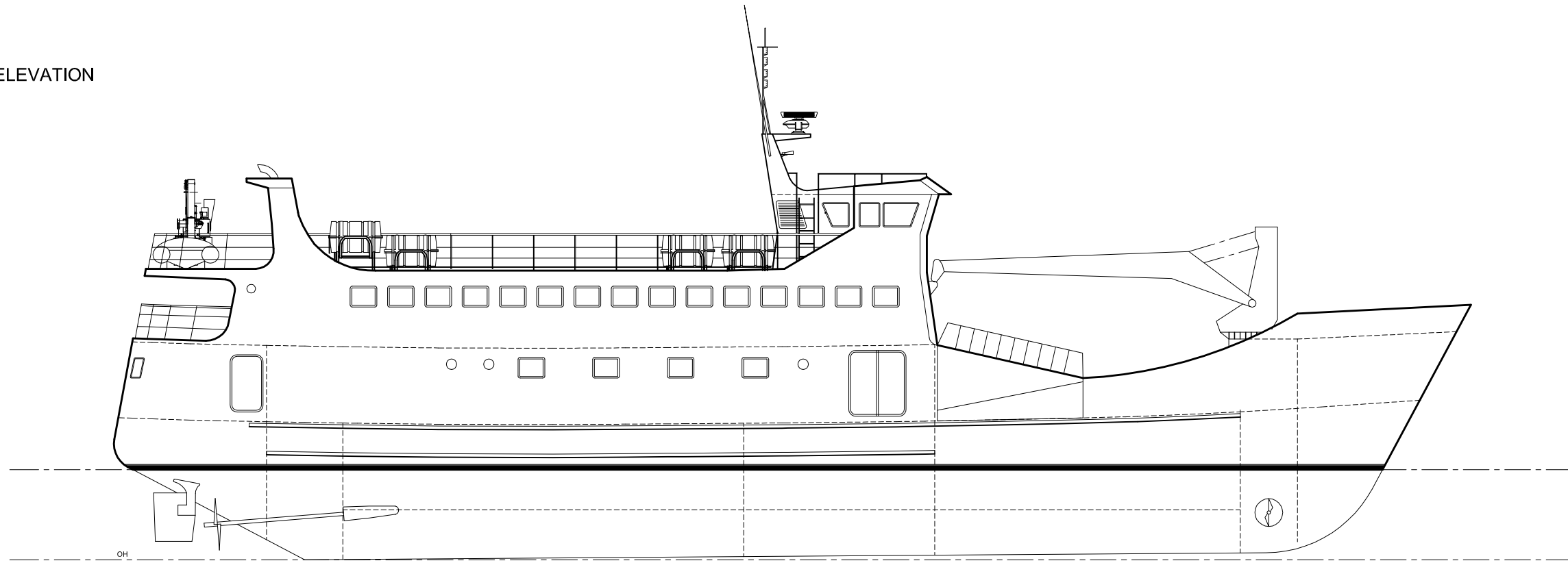
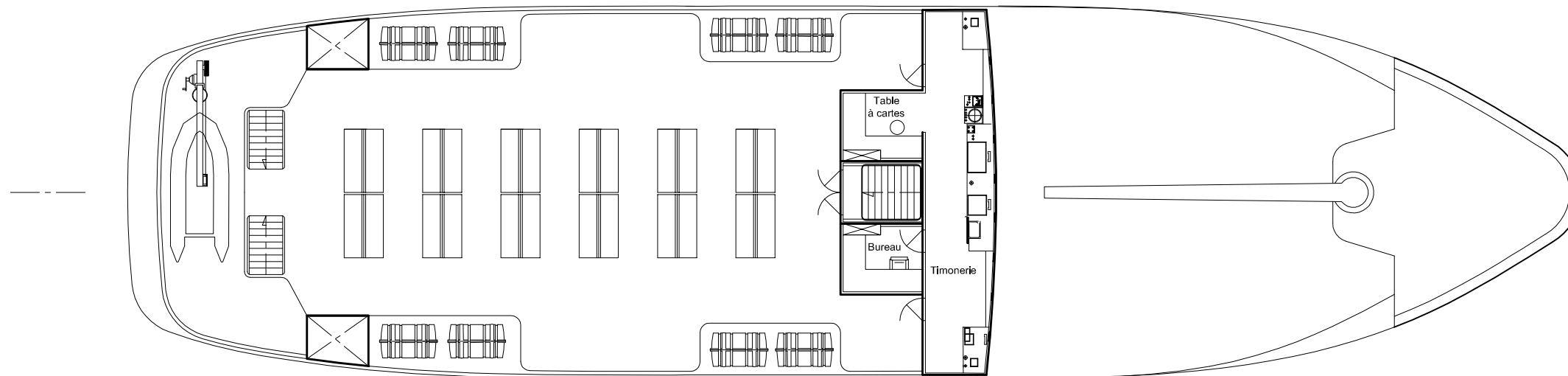


ELEVATION

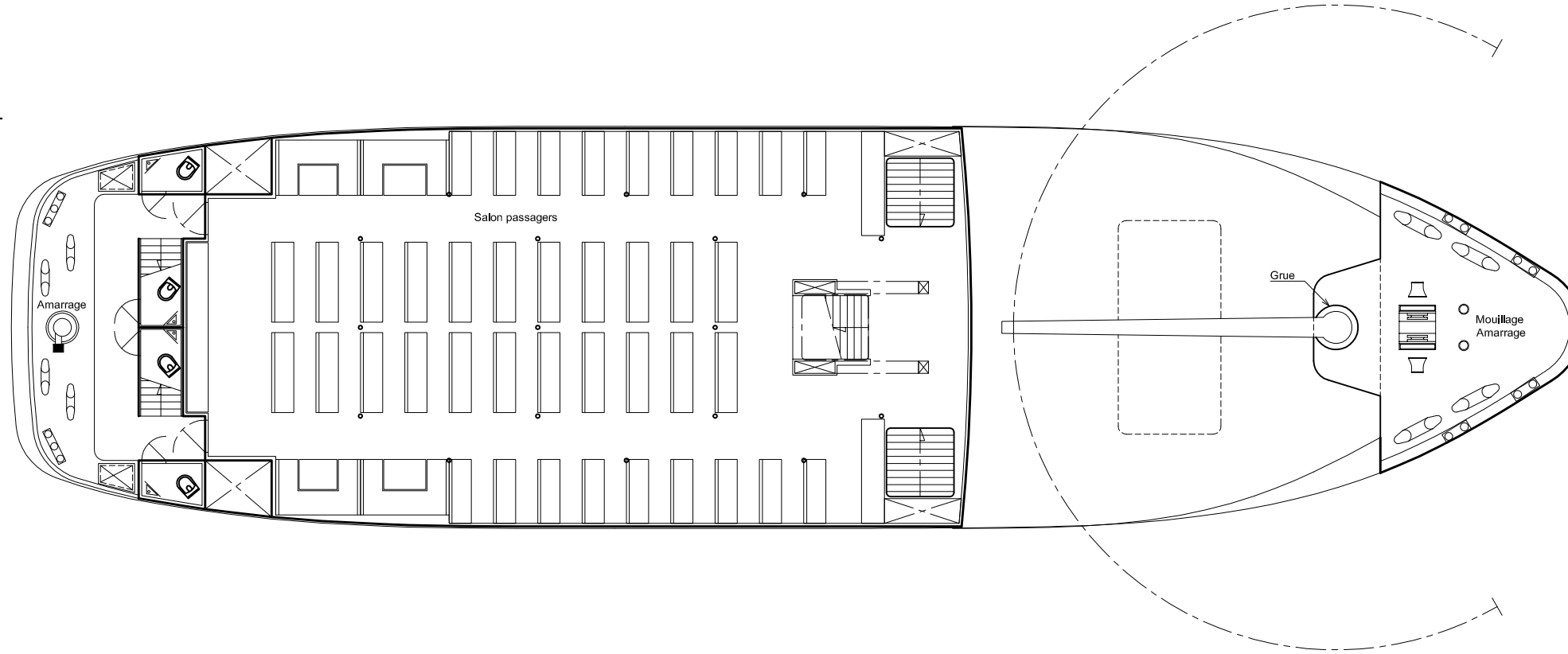


PONT SUPERIEUR

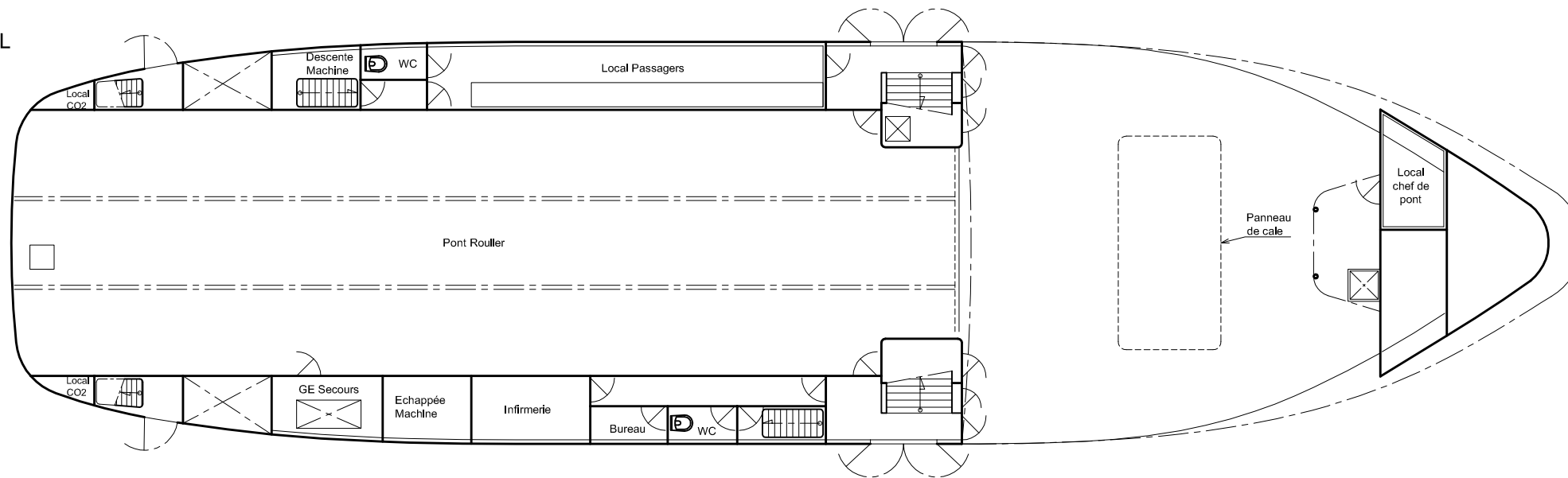


<b>NAVIRE MULTISERVICE "AVENTURE"</b>			
Herskovits, Thome & Tobie - Architecture Navale			
11, passage Boudin, 75020 Paris			
Tél. : 01 42 72 32 33 - Fax : 01 42 72 32 22			
11, rue du Calvaire, 44000 Nantes			
Tél. : 02 40 48 16 66 - Fax : 02 40 48 04 81			
<b>PLAN D'ENSEMBLE</b>			
Version actuelle			
DMY: 06/09/2010	Révision	A	B
Format A3	Echelle 1:150	Planche 1/3	

PREMIER PONT

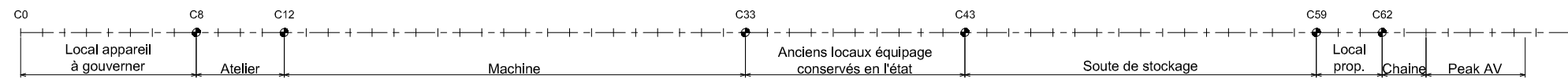
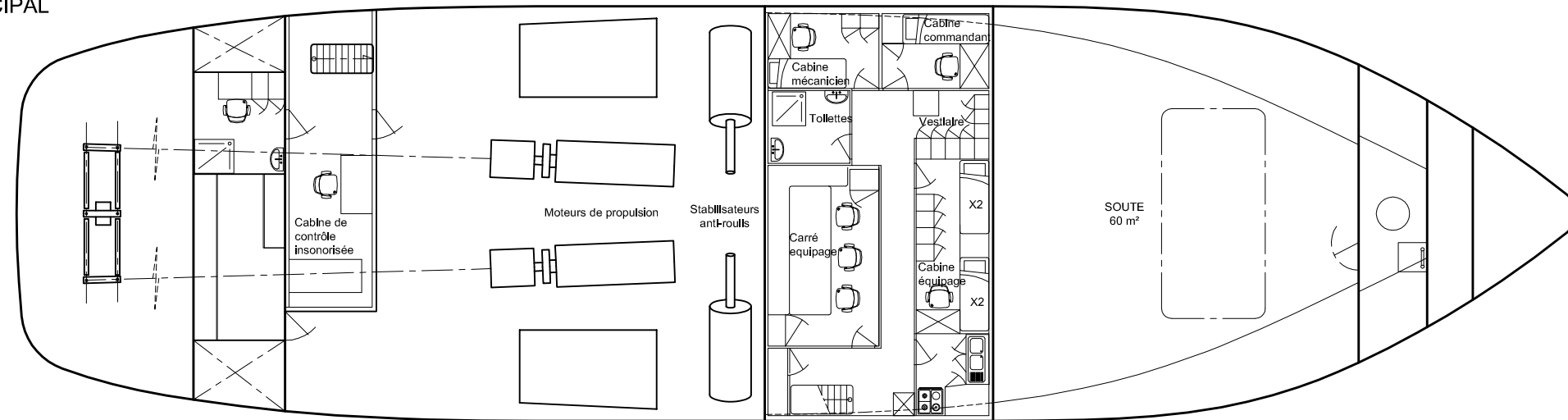


PONT PRINCIPAL

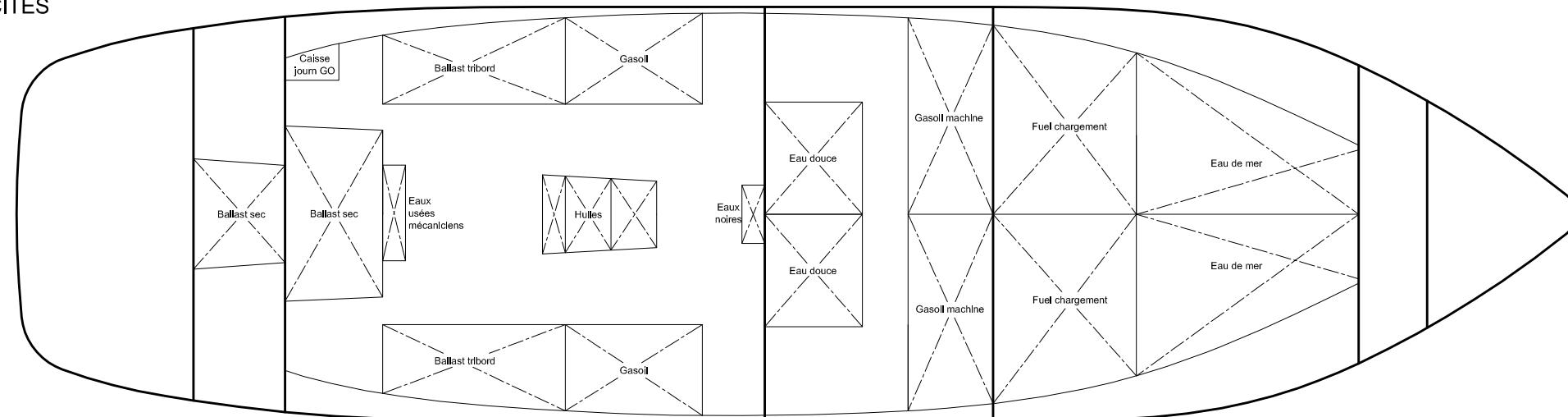


<b>NAVIRE MULTISERVICE "AVENTURE"</b>			
<b>Herskovits, Thome &amp; Tobie - Architecture Navale</b>			
11, passage Boudin, 75020 Paris			
Tél. : 01 42 72 32 33 - Fax : 01 42 72 32 22			
11, rue du Calvaire, 44000 Nantes			
Tél. : 02 40 48 16 66 - Fax : 02 40 48 04 81			
<b>PLAN D'ENSEMBLE</b>			
Version actuelle			
DMY: 06/09/2010	Révision	A	B
Format A3	Echelle 1:150	Planche 2/3	

SOUS PONT PRINCIPAL



PLAN DES CAPACITES



<b>NAVIRE MULTISERVICE "AVENTURE"</b>			
Herskovits, Thome & Tobie - Architecture Navale 11, passage Boudin, 75020 Paris Tél. : 01 42 72 32 33 - Fax : 01 42 72 32 22 11, rue du Calvaire, 44000 Nantes Tél. : 02 40 48 16 66 - Fax : 02 40 48 04 81			
<b>PLAN D'ENSEMBLE</b> Version actuelle			
DMY: 06/09/2010	Révision	A	B
Format A3	Echelle 1:150	Planche 3/3	